



NN2 Series

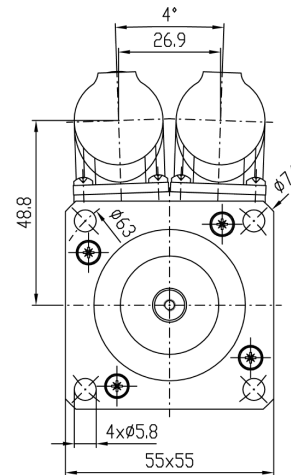
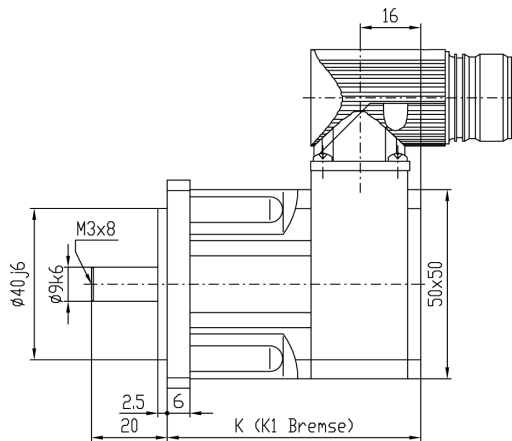
U_{dc} = 320 / 560 VDC

General Description:

Compact Design
Rare Earth Magnets
Resolver Feedback
Intercontec-Connectors

Options:

Holding Brake, different Encoders,
Shaft Keyway DIN 6885, UL, ATEX,
spec. Shaft / Flange / Housing,
Gearbox, Flying Leads, etc...



Parameters			NN2-0028		NN2-0054		NN2-0075		NN2-0095	
DC Bus Voltage	U _{dc}	V	320	560	320	560	320	560	320	560
Rated Torque	M _N	Nm	0,25		0,48		0,68		0,85	
Rated AC Current	I _N	A	0,96	0,96	1,12	0,9	1,48	0,83	1,7	1,07
Stall Torque	M ₀	Nm	0,28		0,54		0,75		0,95	
Stall Current	I ₀	A	0,97	0,97	1,17	0,93	1,54	0,86	1,82	1,15
Peak Torque	M _{max}	Nm	1,1		2,2		3,0		3,8	
Peak AC Current	I _{max}	A	4,5	4,5	5,4	4,3	7,1	3,9	8,4	5,3
Rated Speed*	n _N	min ⁻¹	4500							
Max. Mech. Speed	n _{max}	min ⁻¹	12000							
Torque Constant	K _T	Nm/A	0,29	0,29	0,46	0,58	0,49	0,88	0,52	0,83
Voltage Constant	K _E	V/1000	17,5	17,5	28	35	29,5	53	31,5	50
Resistance Ph-Ph	R _{Ph}	Ω	28,3	28,3	25,9	41,1	17,0	54,0	13,1	33,6
Inductance Ph-Ph	L _{Ph}	mH	18,9	18,9	32,3	51,0	22,7	72,0	19,0	48,5
El. Time Constant	T _{el}	ms	0,67	0,67	1,2	1,2	1,3	1,3	1,45	1,45
Therm. Constant	T _{th}	min	10		12		15		18	
Inertia	J	kgcm ²	0,05		0,07		0,09		0,11	
Rated Brake Torque	M _{Br}	Nm	2,0							
Weight w/o brake	m	kg	0,76		0,93		1,1		1,27	
Weight with brake	m _{Br}	kg	1,20		1,37		1,54		1,71	
Length w/o brake	K	mm	67		82		97		112	
Length with brake	K1	mm	105		120		135		150	

*Windings for different rated speeds are available; parameter tolerance +/-10%

Protection Class	IP64, optional IP65 or IP67
Electrical Connections	Intercontec-Connectors (2 pcs)
Thermal Protection	PTC, optional thermal switch (normally closed type) tripping out at 140°C, KTY or NTC
Rated Parameters	Acc. to EN 60034-1, T _{Ambient} = 40°C, T _{Rise} = 110 K, Flange Temperature ≤ 65°C
Motor Controller	Standard winding designed for power supply U _{cc} = 320 or 560 VDC, different execution optional
Flange/Shaft	Acc. To DIN 42955N, optional R